



REFLECTION OF NATURE
REFLECTION OF NATURE

artstone® 

THE
INNOVATIVE
FACE OF
DESIGN





Becoming operational in 2005 as a pioneer and innovative brand of decorative wall panels, Artstone Inc. carries the understanding and vision of decoration to a different area and allows creative solutions inspired by the nature in all spaces.

It forges ahead to be the representative of quality and trust as a successful business partner of project solutions, operating locally and abroad with its young, dynamic and visionary team.

“Artstone Decorative Wall Panels”, designed and produced in Turkey, is the brand that does not keep up with the fashion but creates the fashion with its own line and unique models.

STEEL

G QUBE	10
BOLTS	11
FORG	12
WOXX	13
ROOTZ	14
WELD XIX	15

INNOVATIVE ART

MASONRY MOSS	18
BAOBAB MOSS	19
AMAZON	20
TIMBER	22
RUINA	24
MAYON	26
HORMIGON VINTAGE	28
ZANZIBAR	30
HORMIGON PLUS OXIDO	32
WOOD BARBADOS	33
ROCA	36
TAYGA	38
SPECTRA	39
TOCHO	40
TORNILLO OXIDO	42
MAGMA	44
PICADA VINTAGE	46
PIZARRA	47

CONCRETE

HORMIGON 3D	50
HORMIGON	52
HORMIGON LOFT	54
HORMIGON PLUS	56

BRICK

HERITAGE XVII	60
HERITAGE XVIII	61
HERITAGE XIX	62
HERITAGE LOFT	64
LADRILLO LOFT CURE	65
LADRILLO MASONRY	66
LADRILLO	67
LADRILLO LOFT	70
LADRILLO VINTAGE	72
LADRILLO PERFORADO	74
LADRILLO BRECON	76

STONE

FIJI	80
LASCAS	82
LAJAS	84
PICADA	86
RUSTICA	88
LABRANZA	89
PRENAICA	90
LABERINTO	92
LAстра	93
SILLAREJO	94
CAL y CANTO	96

REFERENCES	98-113
-------------------	--------

KAROART

MARGAUX	118
ARIETTA	120
BOIS	122
VERMONT	123
DAISY	126
BRODERIE	127
EPICURE	128
VERSAILLES	130
GRENIER	133
PLAFONT	134
FLORENZ	136
FONTENAY	137
VICTORIAN	138

PRODUCT ADVANTAGES	140-141
SPECIFICATIONS	142
INSTALLATION	143

C-WALL	145-159
---------------	---------

OUR DIFFERENCES	160-163
------------------------	---------

ARTSTONE AT A GLANCE	164
-----------------------------	-----

ARTSTONE PROJECT APPROACH	166
----------------------------------	-----

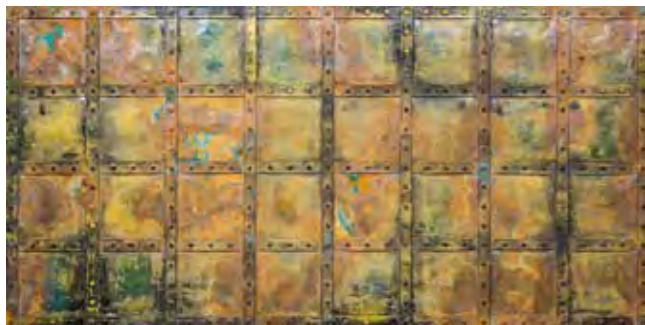
SERVICE NETWORK	167
------------------------	-----

INTERNATIONAL PORTFOLIO	168-169
--------------------------------	---------



STEEL

G QUBE



h: 129 cm
w: 259 cm

A brand new breath to the industrial style...



BOLTS



h: 129 cm
w: 259 cm

Thematic spaces and characteristic time perception...



FORG



h: 128 cm
w: 259 cm

Reflection of the history's most safeguarded buildings to **modern architecture...**



WOXX



h: 128 cm
w: 258 cm

Power and aesthetic in company...



ROOTZ



h: 129 cm
w: 259 cm

From organic forms to
holistic function...



WELD XIX



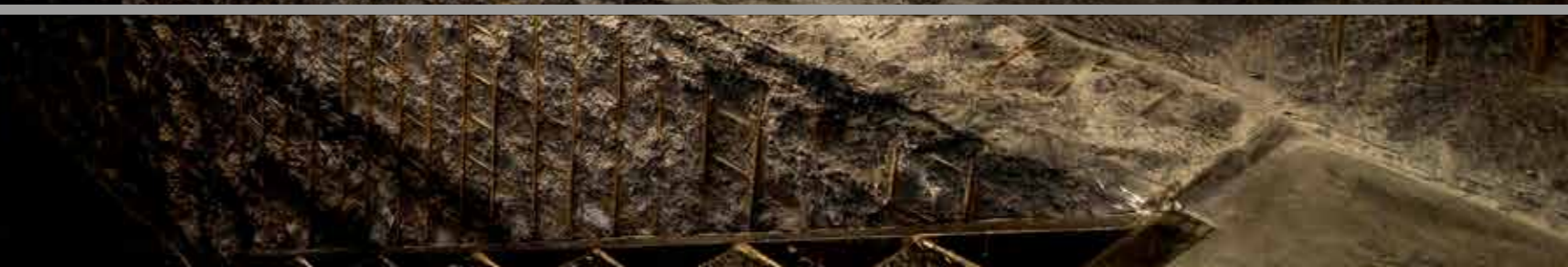
h: 130 cm
w: 259 cm

Constructive **illusions...**





INNOVATIVE ART



MASONRY MOSS



h: 131 cm
w: 278 cm



BAOBAB MOSS



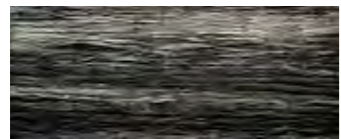
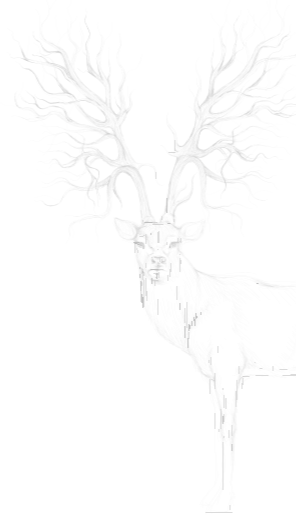
h: 130 cm
w: 300 cm



AMAZON



h: 130 cm
w: 301 cm



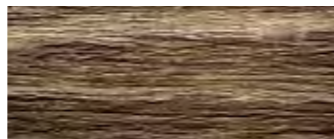
Basalto



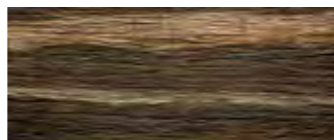
Blanca



Carmin



Earth



Natura



TIMBER



h: 109 cm
w: 281 cm



Basalto



Carmin



Cobrizo



Natura



RUINA



h: 127 cm
w: 296 cm



Arce



Carmin



Gris



Ocre



MAYON



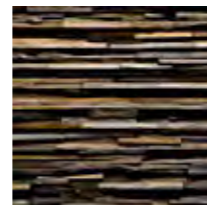
h: 132 cm
w: 115 cm



Carmin



Cobriza



Intenso



HORMIGON VINTAGE



h: 126 cm
w: 296 cm



Multicolor



Natura



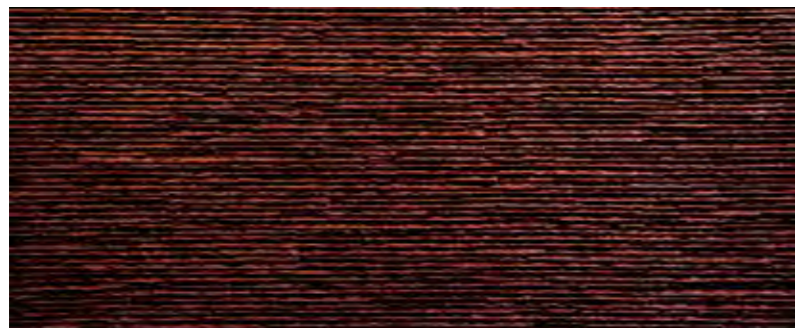
Rojo



Triamel



ZANZIBAR



h: 130 cm
w: 300 cm



Anthracite



Blanca



Carmin



Earth



Intenso



HORMIGON PLUS OXIDO



h: 134 cm
w: 299 cm

WOOD BARBADOS



h: 130 cm
w: 297 cm



Basalto



Blanca



Carmin



Cobriza



Earth



ROCA



h: 131 cm
w: 299 cm



Basalto



Blanca



Carmin



Cobriza



Natura



Negra



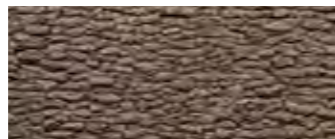
TAYGA



h: 131 cm
w: 296 cm



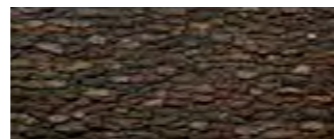
Basalto



Cobriza



Earth



Natura

SPECTRA



h: 120 cm
w: 290 cm



Carmin



Earth



Triamel

TOCHO



h: 132 cm
w: 299 cm



Cobrizo



Earth



Natura



TORNILLO OXIDO



h: 131 cm
w: 296 cm



MAGMA



h: 130 cm
w: 297 cm



Anthracite



Basalto



Blanca



Carmin



Earth



Triamel



PICADA VINTAGE



h: 130 cm
w: 294 cm



Basalto

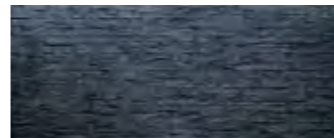


Cobriza

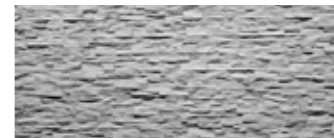
PIZARRA



h: 137 cm
w: 301 cm



Anthracite



Blanca



Carmin



Cobriza



Gris



Intenso



Negra



HORMIGON 3D



h: 130 cm
w: 298 cm



Anthracite



Grey



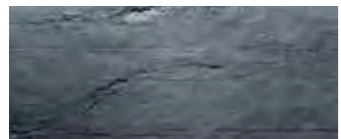
Intenso



HORMIGON



h: 133 cm
w: 300 cm



Anthracite



Grey



Intenso



Triamel



HORMIGON LOFT



h: 127 cm
w: 298 cm



Anthracite



Intenso



Natura



Triamel



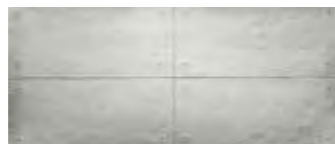
HORMIGON PLUS



h: 134 cm
w: 299 cm



Anthracite



Blanca



Carmin



Cobriza



Grey



Intenso



Triamel





BRICK

HERITAGE XVII



h: 116 cm
w: 292 cm



Basalto



Earth Blanca



Grey Dark



Multicolor Negra



Multicolor



Oxido



Rojo

HERITAGE XVIII



h: 118 cm
w: 301 cm



Basalto



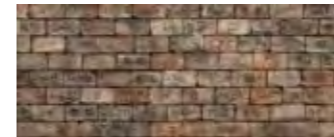
Blanca Dark



Blanca



Earth



Eclectic



Gold Dark



Oxido



Rojo

HERITAGE XIX



h: 131 cm
w: 285 cm



Basalto



Blanca Rojo



Earth



Eclectic



Rojo



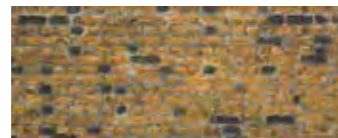
HERITAGE LOFT



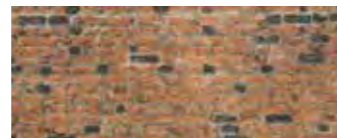
h: 135 cm
w: 298 cm



Earth



Ocre



Rojo

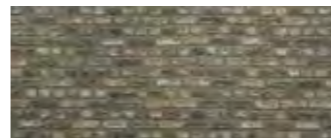


Triamel

LADRILLO LOFT CURE



h: 130 cm
w: 303 cm



Basalto Cobriza



Blanca



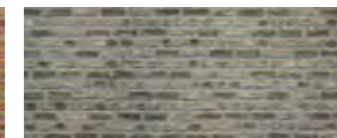
Earth



Grey Dark



Rojo



Terrosa

LADRILLO MASONRY



h: 131 cm
w: 278 cm



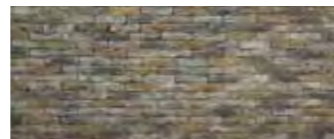
Cobriza



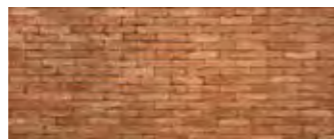
Earth



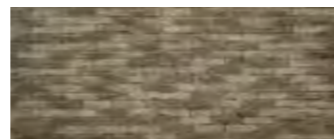
Grey Dark



Intenso

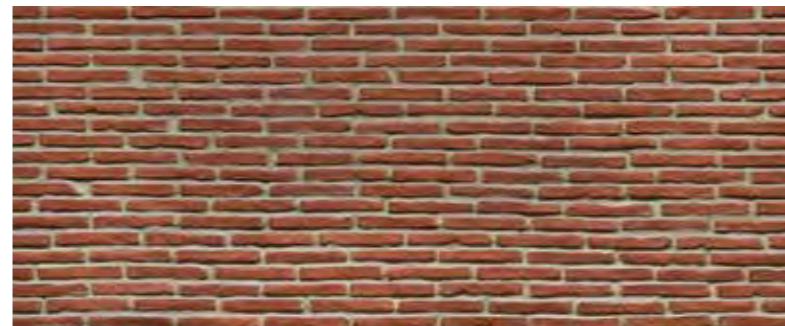


Rojo



Terrosa

LADRILLO



h: 130 cm
w: 294 cm



Ombra



Anthracite



Blanca



Bombay



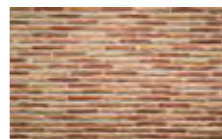
Claro



Grey



Mocha



Multicolor



Negra



Polorojo



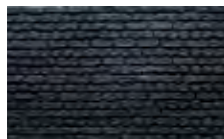
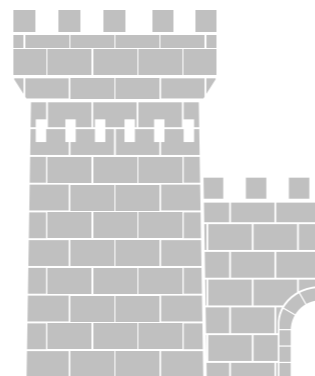
Rojo



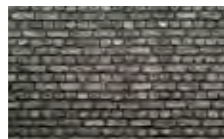
LADRILLO LOFT



h: 129 cm
w: 305 cm



Anthracite



Basalto



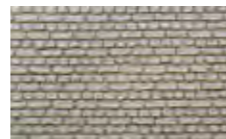
Blanca



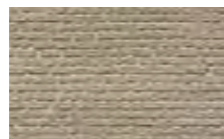
Castanea



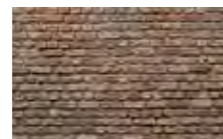
Eclectic



Gravel



Paloma



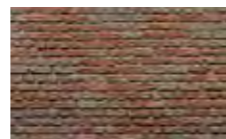
Polorojo



Rojo Efekt



Rojo



Rojo Grey



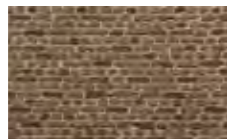
LADRILLO VINTAGE



h: 127 cm
w: 298 cm



Blanca



Cobrizo



Earth



Earth Eclectic



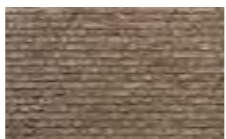
Eclectic



Multicolor



Negra



Polo Eclectic



Rojo



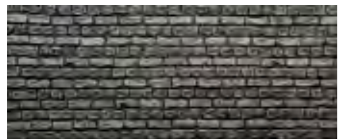
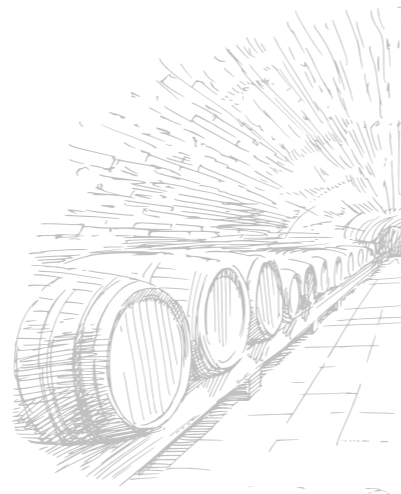
Triamel



LADRILLO PERFORADO



h: 129 cm
w: 299 cm



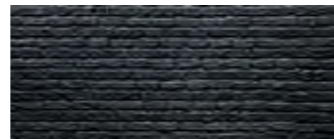
Basalto



Blanca



Eclectic



Negra



Rojo



Triamel



LADRILLO BRECON



h: 133 cm
w: 304 cm



Anthracite



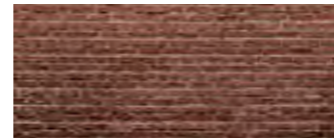
Blanca



Claro



Cobrizo



Rojo





STONE

FIJI



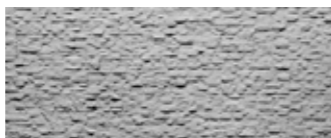
h: 127 cm
w: 296 cm



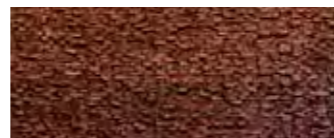
Anthracite



Basalto



Blanca



Carmin



Earth



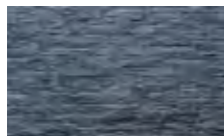
Negra



LASCAS



h: 132 cm
w: 297 cm



Anthracite



Basalto



Blanca



Bombay



Caramel



Cobriza



Gris



Lagoon



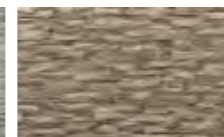
Negra



Ocre



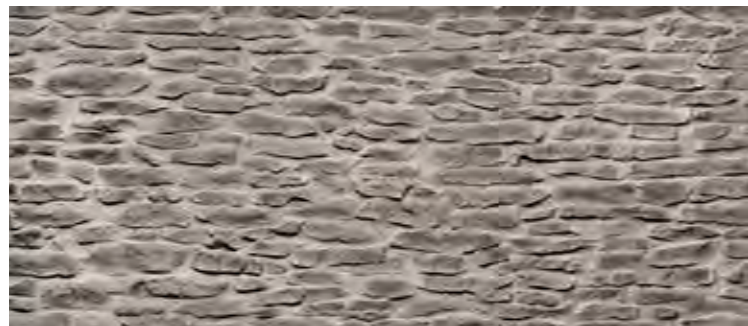
Ombra



Terrosa



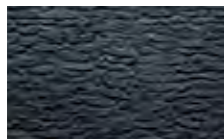
LAJAS



h: 131 cm



w: 302 cm



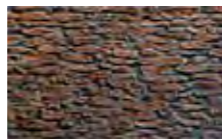
Anthracite



Basalto



Blanca



Carmin



Cobriza



Gaslar



Gris



Ocre



PICADA



h: 131 cm
w: 301 cm



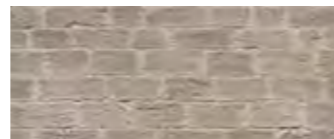
Blanca



Castellana



Gravel



Gris



Terrosa



RUSTICA



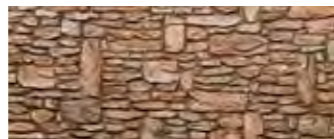
h: 132 cm
w: 298 cm



Blanca



Castellana



Cobrizo

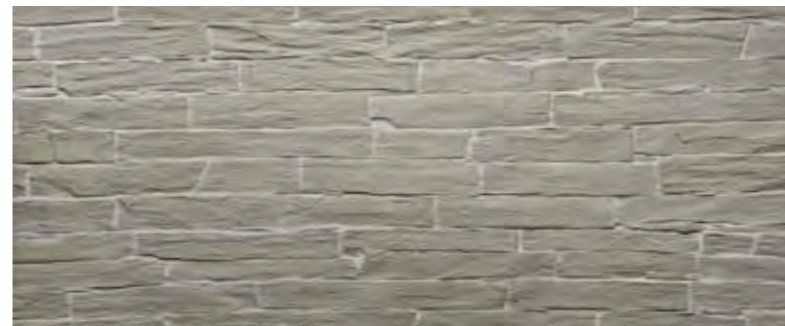


Gris



Ocre

LABRANZA



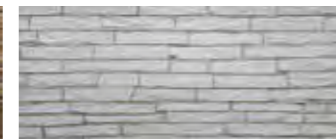
h: 132 cm
w: 303 cm



Carmin



Earth



Gravel



Gris



Paloma

PRENAICA



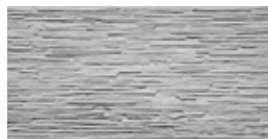
h: 132 cm
w: 300 cm



Anthracite



Aspen



Blanca



Carmin



Cobriza



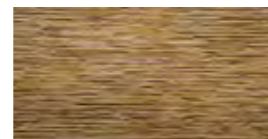
Gris



Mocha



Negra



Ocre



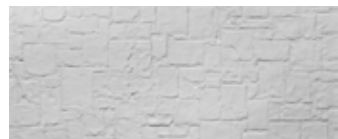
Tosca



LABERINTO



h: 131 cm
w: 301 cm



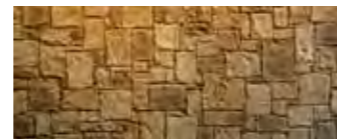
Blanca



Carmin



Earth



Terrosa

LASTRA



h: 131 cm
w: 298 cm



Arce



Blanca



Castellana



Cobriza



Ocre

SILLAREJO



h: 130 cm
w: 300 cm



Arce



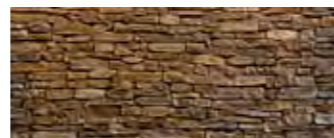
Blanca



Carmin



Claro



Cobrizo



CAL y CANTO



h: 132 cm
w: 297 cm



Arce



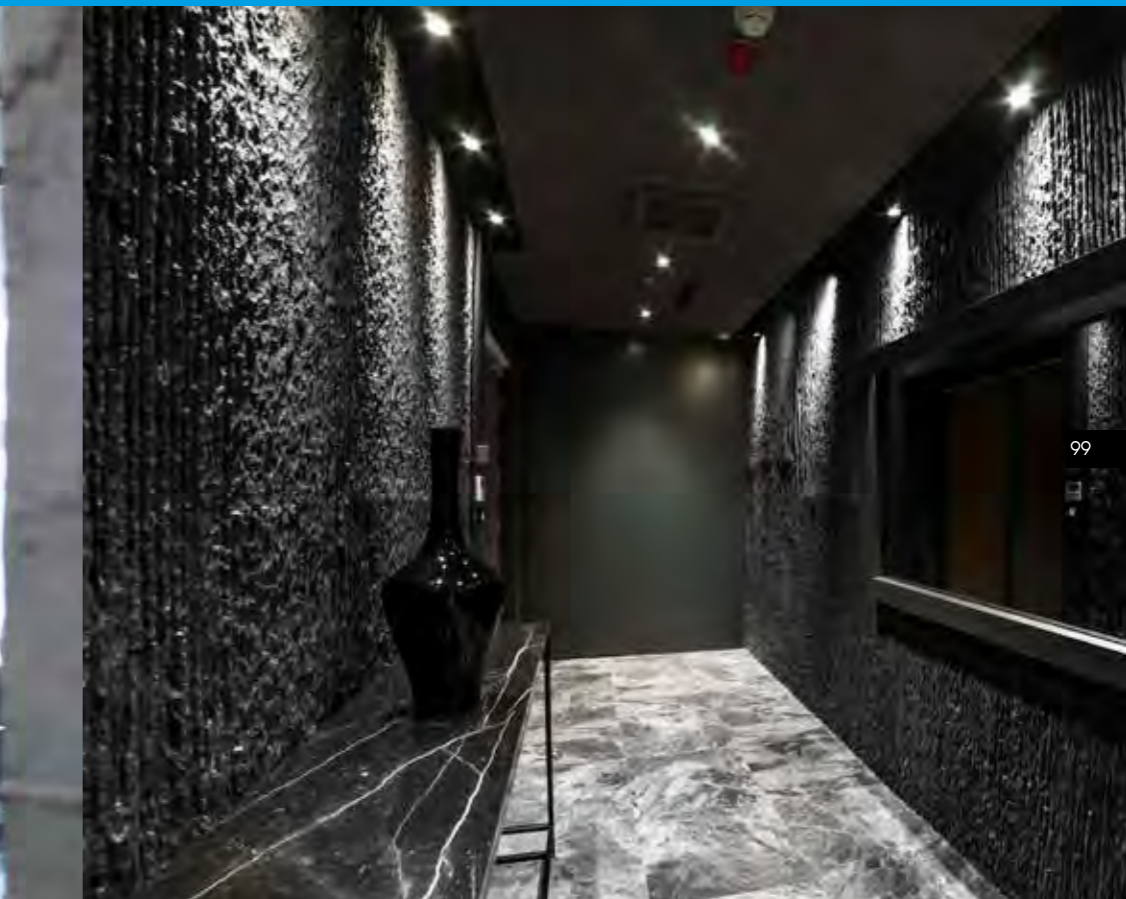
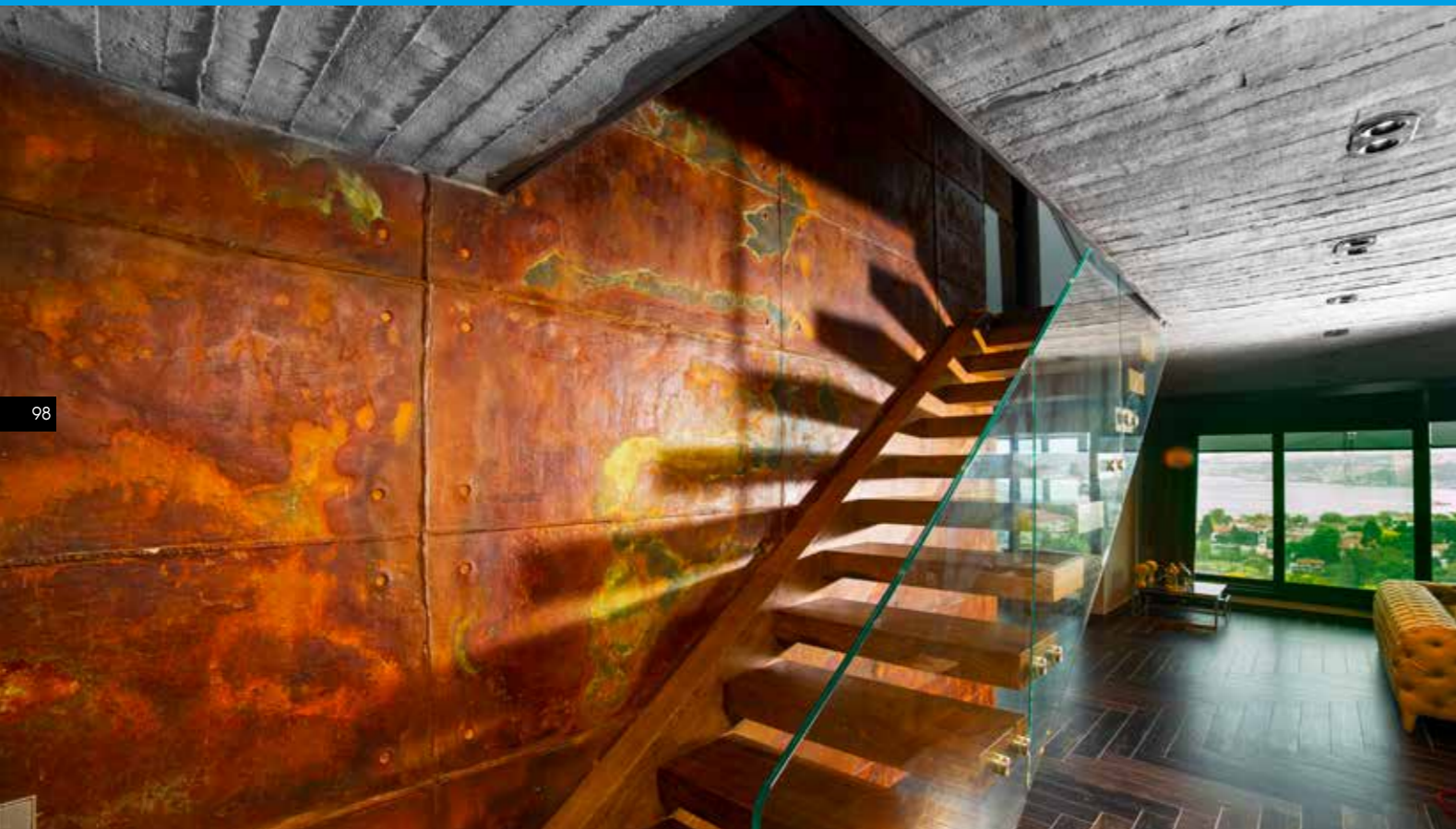
Castellana



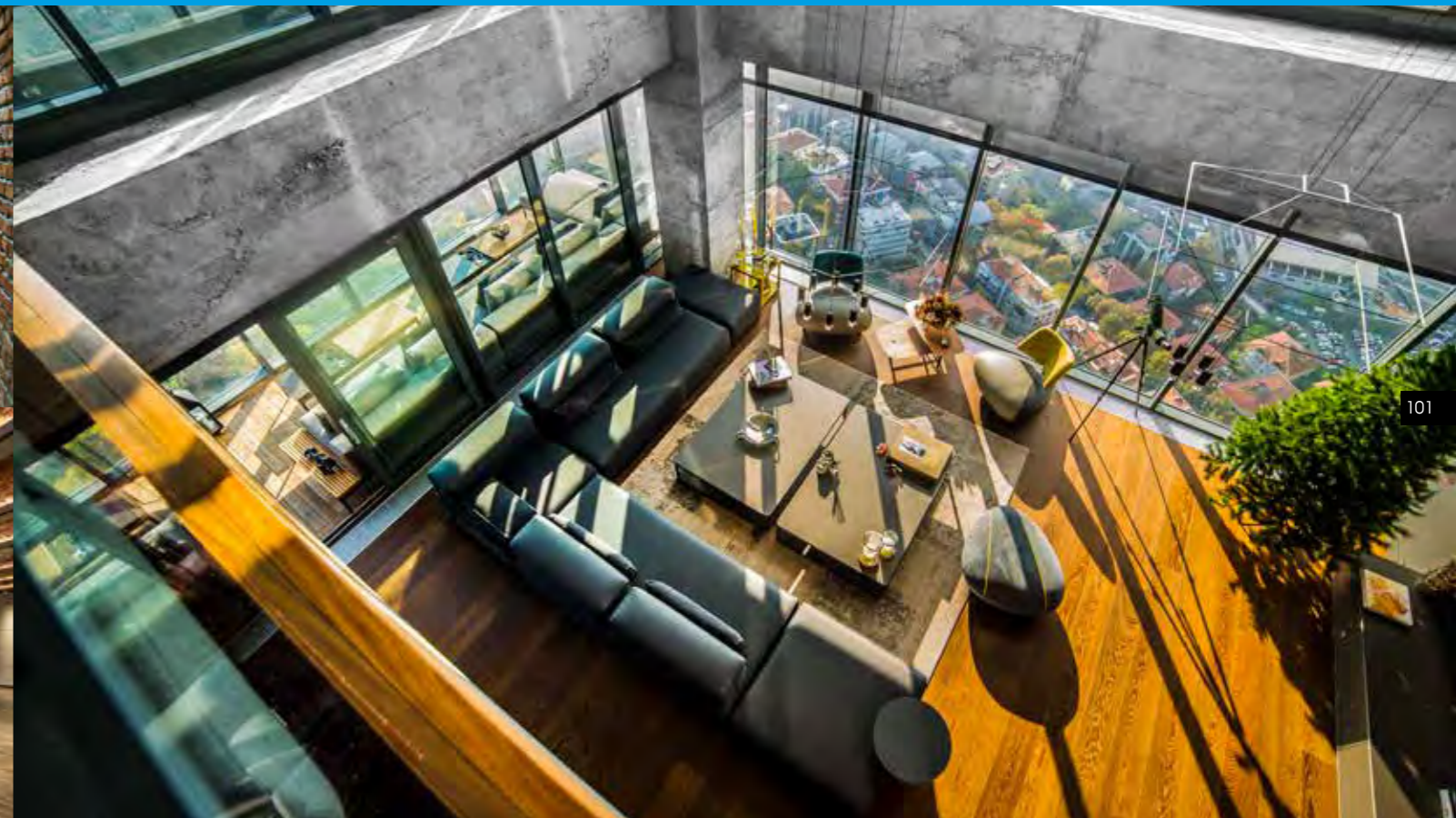
Cobriza



REFERENCES



REFERENCES



REFERENCES



REFERENCES



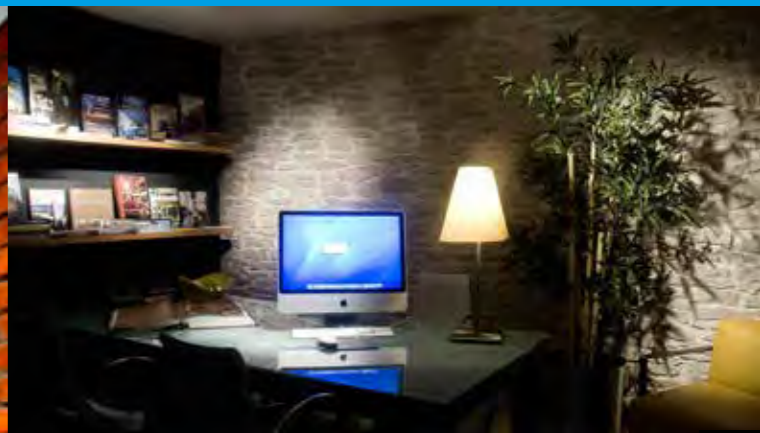
REFERENCES



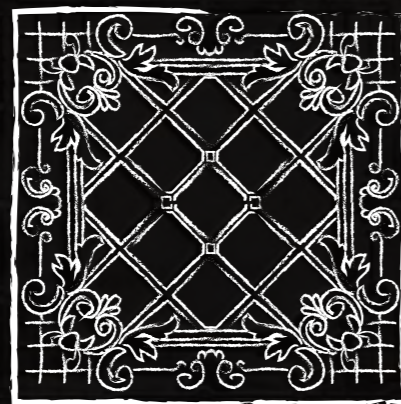
REFERENCES



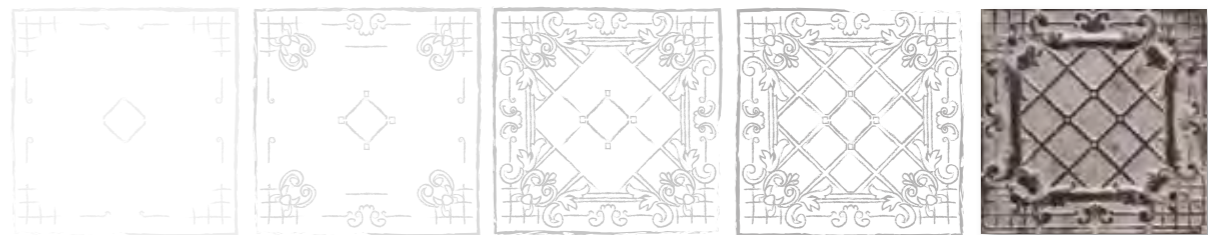
REFERENCES







KAROART
ETHNIC VINTAGE



We are bringing the traces of the past into your spaces...

Inspired by culture, history and a noble origin, “**Karoart**” patterns offer an international sense of aesthetics. Karoart series offer 13 models and more than 100 color combinations to fill your spaces with luxury, nobility, grandeur, trust, solidity, generosity and a feeling of history, with light-shadow games that emerge from their patterns, textures and three-dimensional appearance.



116

KARORRT
ETHNIC VINTAGE



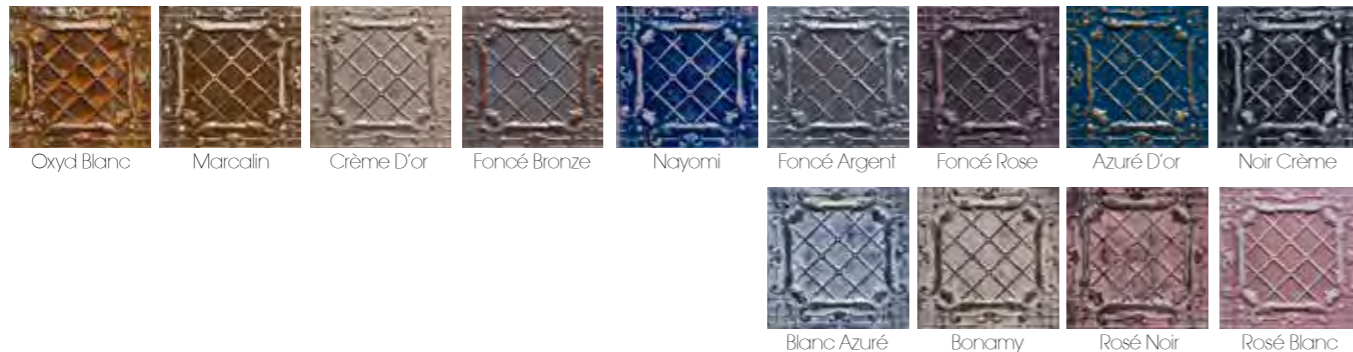
117

MARGAUX



h: 123 cm

w: 246 cm



Oxyd Blanc Marcalin Crème D'or Foncé Bronze Nayomi Foncé Argent Foncé Rose Azuré D'or Noir Crème



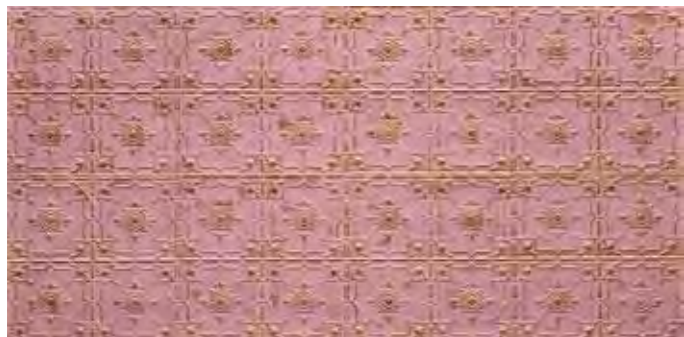
Blanc Azuré Bonamy Rosé Noir Rosé Blanc

118



119

ARIETTA



h: 124 cm

w: 247 cm



Rose D'or



Blue Bronze



Bonamy



Feu Vert D'or



Gris D'or



Noir Bronze



Noir Blanc

120

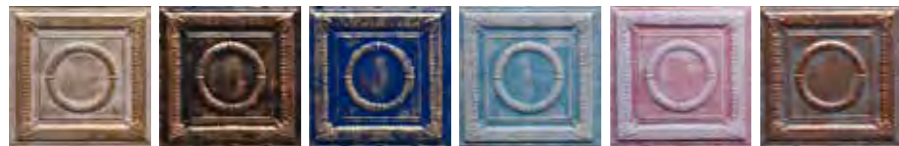


121

BOIS

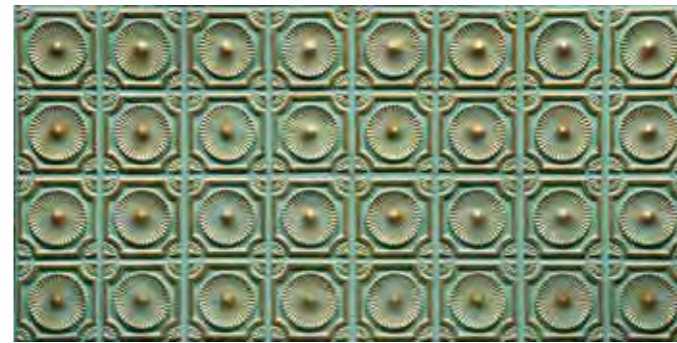


h: 123 cm
w: 246 cm



Crème D'or Noir Bronze Blue Marine D'or Azuré Crème Rosé Blanc Foncé Bronze

VERMONT



h: 121 cm
w: 242 cm



Crème D'or Rosé Argent Noir Bronze Foncé D'or Azuré Bronze Feu Vert D'or



DAISY



h: 123 cm
w: 246 cm



Oxyd Foncé D'or Crème D'or Anthracite Bronze Fonce Bronze

BRODERIE



h: 124 cm
w: 247 cm



Noir Bronze Crème D'or Foncé D'or Foncé Argent Foncé Bronze Noir Argent

EPICURE



h: 120 cm

w: 241 cm



Dijon

Noir Bronze

Chambéry

Foncé D'or

Rosé Pol Azuré

Anthracite Argent

Azuré Rosé

Crème D'or

Blue Marine D'or



Foncé Argent



VERSAILLES



h: 123 cm



w: 244 cm



Anthracite Rosé Foncé Gris Noir Blanc D'or Feu Vert D'or Mordoré Noir Foncé Blanc Faon Blanc Dijon Blanc Bonamy



Rosé D'or Crème Foncé





GRENIER



h: 122 cm
w: 246 cm



PLAFONT



h: 123 cm



w: 246 cm



Noir D'or

Bonamy

Noir Blanc

Anthracite Bronze

Dijon



*Innovation
& Technology*

FLORENZ



h: 123 cm
w: 245 cm



Foncé Bronze Noir D'or Gris Blanc

FONTENAY



h: 120 cm
w: 240 cm



Mordoré Noir Noir Bronze Noir Argent Bonamy Blue Marine D'or

VICTORIAN



h: 124 cm
w: 247 cm



Noir Bronze



Bonamy



Dijon Blanc



Oxyd



Blanc D'or



Foncé Blanc

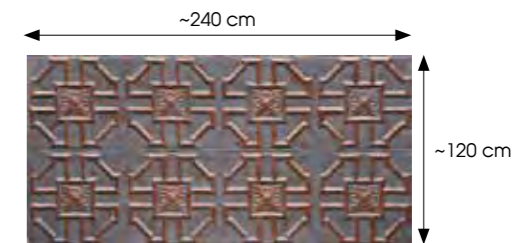


PRODUCT ADVANTAGES

With its lightweight structure, its versatile products that can be easily applied to all interior and exterior areas with the exception of floors and its design infrastructure that harmonizes with different styles, Artstone has become a favorite brand in decoration sector.

- Artstone resembles to natural stone in its appearance and texture.
- It gives the exact same effect as desired.
- It can be easily applied to any surface when plastering is completed.
- It eliminates extra costs such as painting and insulation.
- Comparing to natural stone, it is more practical to install an installation times are greatly reduced.
- It is not affected by water and humidity.
- It can be easily applied to surfaces previously damaged by these conditions and it eliminates such problems.
- It eliminates unfavorable factors such as regional breaks and fragmentation and joint gaps which often occur in natural stone.
- It can be mounted on any surface. It does not affect the static, and puts virtually no extra weight on the application surface.
- In addition, the costs of disassembly are minimized since it is easy to dismount.
- It can be drilled and cut.
- Any decorative material can be hung on it.
- By forming columns and arches from profiles, you can create partition walls, fireplaces, vaults and etc. on any desired surface.
- It is very simple to install with screws and dowels. It is a practical and impressive solution that saves construction time - important for companies like Hotels, SPA Centers, Cafes, Restaurants and Stores that often need decorative modifications.
- It does not harm the surfaces it is applied to, except for the screw holes.
- It does not cause any construction dirt (sand, cement etc.) and does not harm the environment.
- It does not require construction and building permission.
- Different shapes can be applied due to its flexible structure.
- In proportion to natural stone's m² weight, it is 10 times lighter.
- Comparing to natural stone, it does not have a possibility to grow bacteria.
- It is easy to clean, can be washed and wiped.

- Spaces and custom designs, which are very hard to be applied with natural stone, can easily look and feel like natural stone, wood or concrete thanks to Artstone®.
- On surfaces, where stone paving is risky and costly such as ceilings, depending on the ceiling structure; it can either be mounted directly to the ceiling or be installed on the carcass built on the vaulted ceiling.
- You can apply custom colors and patina processes on Artstone products of your personal choice or corporate identity from the custom, non-standard RAL catalog.
- Panel measurements stated in the catalogue may vary up to ±1% .



ORIGINAL PRODUCT SUPPLY



NON-FLAMMABILITY



SPECIFICATIONS

- They are panel systems that are produced of 20 % fiberglass, 70 % ecological resin (isophthalic, low in stress, 1st class polyester) and 10 % natural stone dust and prepared with special coloring techniques.
- **Artstone®** has a real stone-like feel and look. It feels like natural stone.
- It is not PVC, MDF or NATURAL STONE.
- **Artstone®** panels is in «A2» class of non-flammability criteria (reaction of construction products to fire and fire resistance performance) in Euroclass TS EN 13501-1 classification. With reference to technical data, there is no deformation and deformation between -40 and +120°C degrees. Its thermal resistance is 800 °C. All product groups have «non-flammability feature» as a standard. Some of our models are optionally produced in «Class B». The weight of our panels per m² and their thickness vary depending on the model.
- While their weight varies between 6-10 kg/m², their thickness is between 7 mm and 12 mm, their depth range from 1 to 4 cm.
- Panel dimensions are; Artstone series; ~130x300 cm. - Karoart Series ~120x240 cm. Artstone covers ~ 4 m² space, Karoart covers ~ 3 m² space
- Its sound insulation index is 40db. In terms of the sound level in a space, it insulates 100hz sound on average.
- It provides ultraviolet protection and is not affected by harmful rays.
- It is thin, yet resistant to damages and shock absorbing.

- Its color does not fade. We are solution partners with «JOTUN», which is the world's leading brand in terms of paint quality and fastness guarantee.
- It is not affected by water and humidity.
- It has many alternatives in any natural stone, concrete, tile or brick, stone and oxide look.
- It can be cut to the desired dimensions. It can be applied to any wall or ceiling surface using screws and dowels after its rough construction is completed.
- It does not include any carcinogenic materials. It has been certified that it is not harmful to human health or environment.
- Since original stone dust is used in production instead of synthetic paint, the color of panels might differ as it does in natural stone.
- Due to its lightweight, it can be mounted on portable stands. It can be shaped due to its flexible structure. It can be applied to cylindrical spaces with 50 cm dimensions, which is the lower limit. (The lower limit varies depending on the type of product.)
- It is suitable for exteriors.
- Since a special mastic filling that contains stone dust is used on joints and junctions, panels have the pattern integrity, not pattern incoherence.
- Each model has its own touch-up paints. During touch-up process, the pattern is applied on junction points and screws, then joint paint is applied and a solid look is acquired.

WALL COVERING INSTALLATION



1- Measuring the application area



2- Scaling of the panel to be applied



3- Cutting the panel by angle-grander



4-a) Assembling by nails



4-b) Assembling by screws



5- Leaving a space by 1cm between two panels



6- Preparing the assembly putty



7- Covering the spaces by assembly putty by using a putty knife



8- Whiping into shape by brush and putty knife



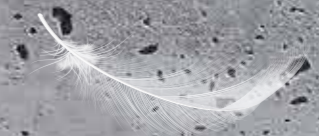
9- Waiting for drying for assembly putty



10- Re-touch painting by airbrush



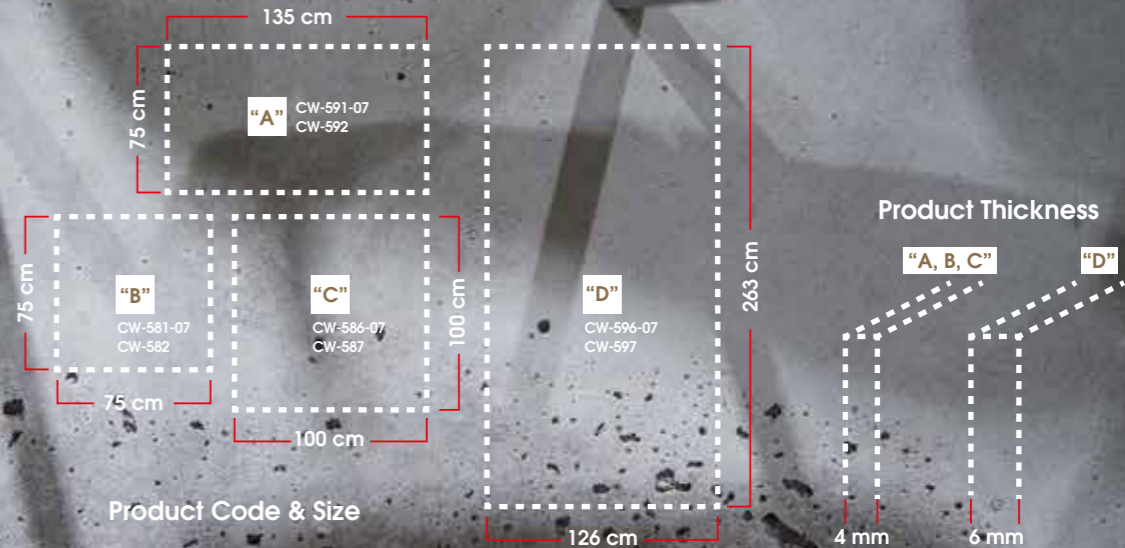
11- Installation finished after drying

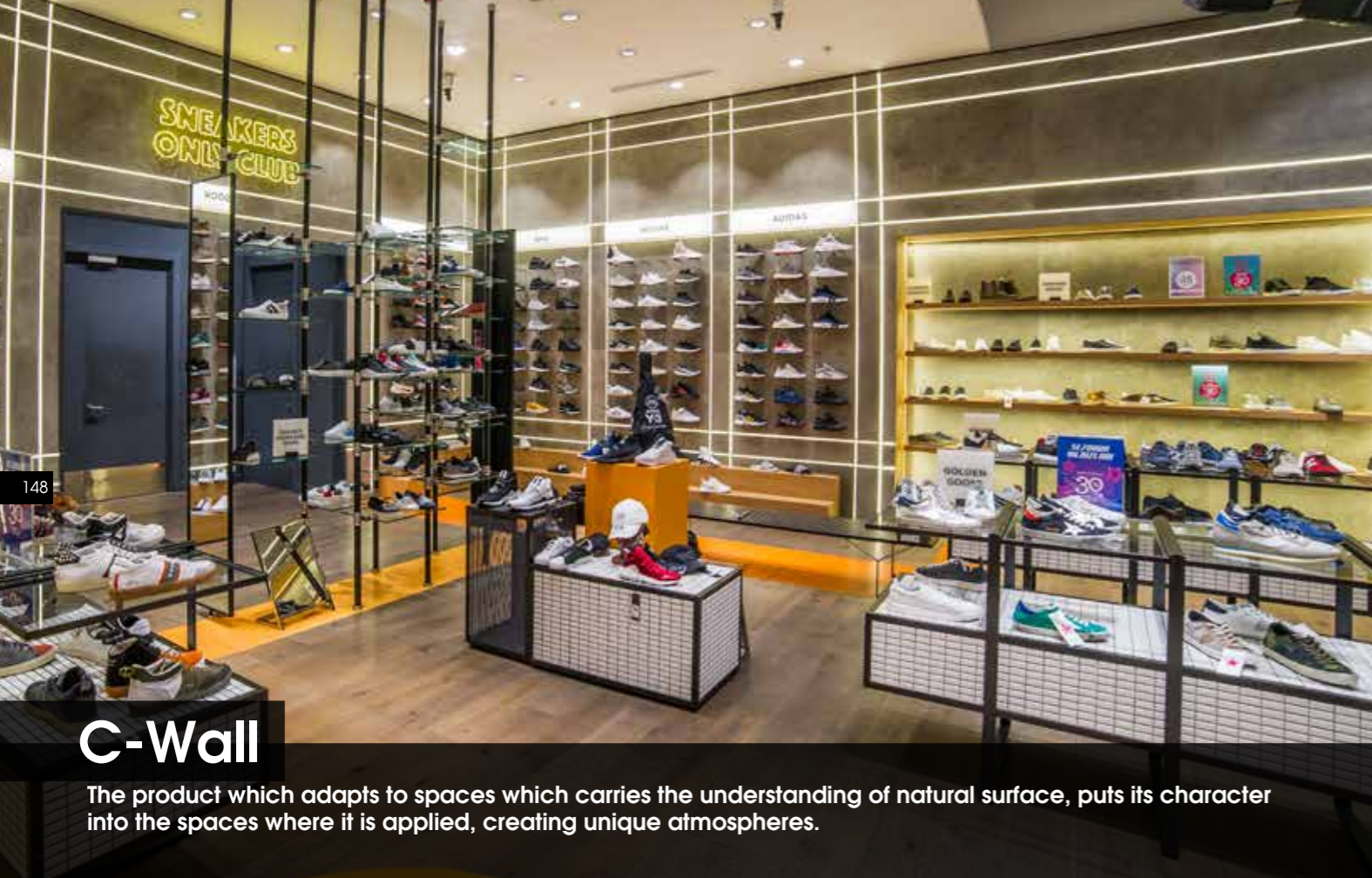


intenso



grey





C-Wall

The product which adapts to spaces which carries the understanding of natural surface, puts its character into the spaces where it is applied, creating unique atmospheres.



CONCRETE

C-WALL panels, the choice of those who want to create surfaces that are inspired by city life, pledges the beauty of the material's most unspoiled appearance and carries the understanding of natural surface in its soul.

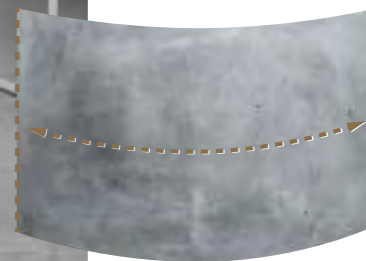


Flexibility in design and application

C-WALL, with its two colour alternatives, exhibits different characters of concrete on the surfaces. Intenso provides a dense concrete look, while Grey creates a more simplistic and plain surface. It can also be coated to organic formed surfaces perfectly with its light and flexible structure.



Colour alternatives in two different shades



It provides application practicality on cylindrical forms and curves with its flexible structure.



Unique, natural and aesthetic appearance in each panel



With C-WALL, the lightest panel in the world that has concrete appearance and texture, it is possible to obtain an alternative design that lightens the building weight in interior and exterior with a correct infrastructure. With C-WALL you can either form minimalist surfaces in your spaces, or obtain ceilings with brutalist effects, or even turn the material into groundbreaking designs by coating the surfaces of your furnitures.



NEW GENERATION WALLS



Spaces
where minimalist
and simplistic lines meet

C-WALL
new generation concrete



154

155





Application Steps

The lightest wall panel in the world with natural concrete appearance.

- 1- Collection of necessary tools
- 2- Dimension
- 3- Cutting
- 4- Silicone application
- 5- Installation

Panel weights:
4 mm = 5 kg/m²
6 mm = 7 kg/m²



C-Wall tie-rod die opening process

- 1- Settling and marking the central dimensions of the formwork trails according to the desired distance range
- 2- Drilling process with drill and hinge boring bit
- 3- Retouching the formwork marks with silicone
- 4- Painting
- 5- Conclusion



Concrete, the most familiar texture of our built environment, takes its place on the surfaces now in a lighter, more flexible, more durable and in a more practical way with C-WALL, developed by Artstone R & D department. In addition to the minimalistic effects created in the places where it is applied, C-WALL also brings many technical advantages.

- It gives one-to-one concrete feeling with its texture and appearance. Thanks to the natural air gaps on the panel, it provides the closest image to the natural material.
- It eliminates the material disadvantages such as dust emission, breaking and cracking.
- It is easily applied to surfaces with weak bearing strength thanks to its lightness.
- It does not require professionalism with its practical application method it can be installed by anyone.
- It is the lightest product in the world with natural concrete appearance.
(m² weight: 4 mm = 5 kg/m² - 6 mm = 7 kg/m²)
- After the application "Tie-Rot holes" can be opened with the help of hinge boring bit at the desired number and point.
- It is suitable not only for wall or ceiling surfaces but also for furniture designs.
- It can be glued or pressed to products such as MDF, chipboard, plywood, fibercement, boardex and plasterboard.
- It is in B2 non-flammable class.
- It is not affected by water and humidity.
- Thanks to its flexi feature, it can be applied perfectly in cylindrical areas.
- It is polymer based and manufactured with Artstone technology.



OUR DIFFERENCES

PRODUCT QUALITY

A) RAW MATERIAL

- "Isophthalic polyester" used in the mix is the primary distinctive feature of Artstone panel systems.
- Flexural-tensile strength and impact resistance values known as Barcol hardness enables showing a better performance comparing to general-purpose polyesters.
- Artstone panels, which are suitable for EXTERIOR use due to their strength against acidic environments, sudden changes of temperature and high temperature endurance, show a better performance when compared to its competitors.
- Artstone panels have the same characteristics of the raw material used in manufacture of wind turbines, planes, yachts and boats.
- It is hygienic and suitable for food contact.
- It does not contain any raw material that is hazardous on human health.

The panel does not bend or pull-off in hot and cold environments, especially in outside air conditions. This is the most common problem of panels that are not Artstone.

B) NON-FLAMMABILITY

All models of Artstone panels have "A2 NON-FLAMMABILITY CERTIFICATE". This is the main required qualification for projects that are being constructed and renovated in today's conditions. The fact that companies in composite covering sector with A2 non-flammability certified products is very limited is another reason to prefer Artstone. According to EU regulations, our panels successfully passed the fire test Euroclass TS EN 13501-1 (reaction of construction products to fire and fire resistance performance).



C) PRODUCT THICKNESS & RESISTANCE

Production of Artstone panels in a certain thickness brings maximum resistance along. When equivalent or copied substandard products are considered; thinner panels produced with no resistance to lower the product cost cause problems in the long term. It has been observed that producing panels in substandard thickness causes breakages, cracks and bending. In terms of being in accordance with "technical specifications", Artstone keeps its thickness standard between 7 and 12 mm. The panel's flexural strength has been calculated as 319 N/mm² and modulus of elasticity as 40000 N/mm² as a result of measurements. These values constitute the required standard values. According to TS EN 59 standards, Barcol hardness value is determined as 52. This value is 44 for glass reinforced products, which is above the anticipated hardness. It is important to know that values under the limit are considered as "non-suitability".



D) IMPACT RESISTANCE

In the impact resistance test done according to TS EN ISO 179-1 standards, Artstone panel's impact resistance has been calculated as 30kj/m². Glass fiber composites' Charpy impact resistance value is higher than 25.45kj/m² according to DIN ISO179 standards. This is especially important for unfavorable weather conditions. Resistance of Artstone panels against any possible impact and shock is very high. In conclusion, our product has „shock absorber" feature.

E) THE MOST NATURAL LOOK

If a product is a panel with natural stone look and structure, it does not mean that it has a natural look. 90% Artstone's production process occurs technologically, while 10% occurs with hand-workmanship. This brings the exact creation of the desired structure and look with it. „Natural look", which is obtained through color combinations with special inorganic pigments for the produced panels and special painting techniques performed afterwards, is another distinctive feature of Artstone panels.



NOT EVERY WALL PANEL IS "ARTSTONE".

F) HEAT RESISTANCE

Artstone has a wide interval range in terms of heat resistance. According to the tests performed under ASTM C 666 standards, it has been observed that there is no deterioration or deformation in frost resistance test and no loss of weight. In determination of resistance to water and moisture, expansion-tensile values' accordance with technical specifications and also ASTM E 1069 temperature resistance limit, it has been observed that the product is resistant up to 800°C.

G) USE OF HIGH-QUALITY PAINTS

Fastness guarantee of façades up to 20 years with our solution partnership with the world's leading brand "JOTUN", which proved itself in the sector, is another distinctive feature of Artstone panels.



OUR DIFFERENCES

GUARANTEE PERIODS

A) PRODUCT GUARANTEE

Artstone panels, which have "15-year product guarantee period", take place near the top among brands of composite sector in Turkey. Artstone gives a 15-year guarantee to the person or company that purchases the product as of the invoice date the product is purchased. Under normal terms of use, Artstone products are guaranteed against any problems that might arise from the production. Structural deteriorations such as superficial cracks, rotting and breakage are under the guarantee. In case that there is an unusual deterioration in the product during the guarantee period, it can be reported with a written petition and a photo of the impaired part by agreeing with an Artstone authority. If it is deemed appropriate as a result of the examinations, Artstone is responsible for replacing only the damaged part with a new one or refunding the individual or company as only the damaged product's panel value.

B) INSTALLATION GUARANTEE

With its large, professional and trained staff, Artstone is offering a "5-Year Installation Guarantee" on product applications. Our company, which shows its difference with its sensitivity on the starting and finishing date of projects, is making its guarantee official with reciprocal sales agreements.

SUPERIORITY IN INSTALLATION

With foreign-oriented installation teams within our body, we provide services to domestic & foreign retail and project-based requests with optimal deadlines and our broad professional staff.

In addition, at the created training academy, thanks to the product training provided by experienced Artstone installation supervisors and field training supported by practical applications done in the worksite, training service is provided to candidate teams that would like to receive training.

Installation is performed with "smart screw" and "nail pounding" methods, without compromising on the quality of installation equipment. Our solution partnership with the world's leading brand "HILTI" continues with the awareness that certain solution in panel application is directly proportional to equipment quality.

Use of certified consumables is another important factor that affects the installation quality. The fact that the mastic filling used to put additional spaces together during product application is elastic is a feature that cancels out the possibility of crackage, which arises from natural conditions on the exterior use in addition to interior applications and can occur in time.



CUSTOM APPLICATIONS

A rich color chart we present thanks to our solution partnership with world's leading brand JOTUN and unlimited color combinations that can be applied to the desired panel structure, and also aging structures obtained in the product's visual effect with "special patina" methods, we can apply "custom colors and different structures" and customize the product.

DELIVERY NETWORK

With "Artstone Decorative Wall Panels", which are all designed and produced in Turkey, the optimum level in stock management is maintained. In parallel with the fact that trade is rapidly expanding, Artstone is presenting "fast and optimum solutions" to its customers with "50.000 m² ready stock with 150 different models". Artstone's goal at this point is to respond to the customer's project regardless of their request and as fast as possible without keeping them wait.

CERTIFIED PRODUCTS

The main reason that Artstone is taking the product quality to high standards and has international standards is because it gets the necessary tests for panels done both at home and abroad by prestigious institutions. It is very important for our company that our quality standards are determined by significant institutions such as TÜV, INTERTEK, ITÜ.



EXTENSIVE REFERENCES

Artstone has carried out more than 7.500 projects since 2005, both at home and abroad. We have successfully taken the most important brands of almost all sectors into our references; especially from housing, hotels, restaurants, health, public sector and private businesses. It gives us happiness that these numbers are increasing as we serve to more different masses day after day.

R&D

Tracking the changing world and trends instantly, Artstone is constantly developing new models with its R&D team and aiming to present the best solutions to its customers. By its brand vision, the company is in a constant renovation related to the current trends. In this way, it is adding value to walls with its new solutions, contributing to the sector's future vision with the products it develops and while developing itself it is also inspiring competitors to develop themselves.

ORIGINAL PRODUCT SUPPLY

The back surface of all our panels is covered with craft paper that has the special Artstone logo on it. All products have "ID numbers" and "custom holographic" stickers on the back surface that indicate that the product is original. All panel formatted products that do not have this feature are copied products.



CUSTOMER SATISFACTION

Making no compromises on product quality and its vision since its foundation, Artstone presents top-quality service to its customers with the most advantageous prices and works with all its power to keep their satisfaction at the maximum level and it is creating loyal customers thanks to its continuous standard product and application service.

ARTSTONE AT A GLANCE

PRODUCTION CAPACITY 150.000 SQM/YEAR

MAIN PRODUCT RANGE DECORATIVE PANELS FOR; WALL, CEILING, FACADE

INNOVATIVE, PIONEER SOLUTIONS THAT CREATE TRENDS

MORE THAN 40 EMPLOYEES
3 CENTRAL SHOWROOMS
25 DEALERS
65+ DIFFERENT MODELS
1.000+ COLOR COMBINATIONS
7.500+ COMPLETED PROJECTS

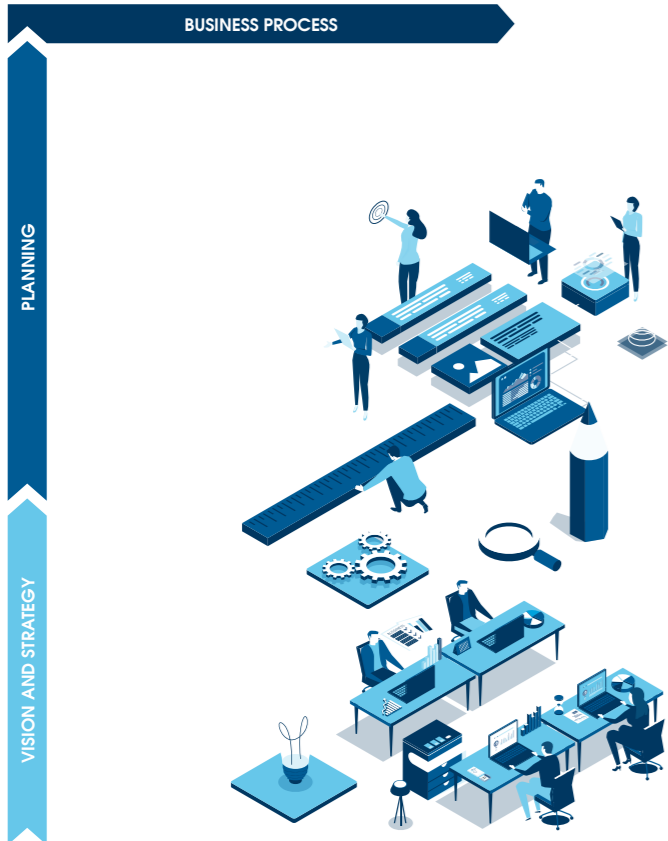
PRODUCTION AREA 4.500 M²

1ST IN THE SECTOR IN TERMS OF MARKET DOMINANCE

AS A RESULT OF COSTUMER SATISFACTION SURVEYS 95% CUSTOMER SATISFACTION

EXPORT TO 35+ COUNTRIES





1 Vision & Strategy DEFINITION OF GOALS AND SCOPE OF PROJECT

- Concept Analysis
- Changing Needs
- Budgeting
- Risk Analysis

2 Planning REALISATION OF PROJECT

- Programme Planning
- Project and Construction Management
- Production and Purchasing Management
- Quality Management

3 Business Process REGULATED COMMISSIONING AND AFTERCARE

- Commissioning
- Aftercare
- Warranty
- Quality Assurance



With its logistics and purchasing services at home and abroad, Artstone provides timeless surfaces with long product life guarantee.

The company started its journey with the goal of creating "natural spaces to be used safely for years" by expanding the areas of use of Artstone products, which are produced in its own factory that has advanced technology in international standards with completely domestic investments. In this direction, the company has specified expanding panel wall awareness in construction and decorative products sectors and enhancing the quality of products and services as its mission.

Our market-leading company is focusing on quality and gives this criteria prominence. Accordingly, we are producing our products, which are in "A2 Non-flammability Class" and a first in its sector, in conformity with the quality norms and standards specified by Germany-based "TÜV-SÜD".

ARTSTONE CONTINUES TO BE PARTNERS IN MANY PROJECTS IN AMERICA, EUROPE, RUSSIA AND VARIOUS COUNTRIES OF ASIA AND AFRICA.



All written and visual materials (articles, photographs, drawings, work photos and website codes) presented in this catalogue belong to Artstone Panel Systems Inc. and its rightful owners. These content are protected by applicable intellectual property, copyright, trademark, patent and or other related laws. Reproduction, distribution, adaptation, arrangement, publishing to the public, transmission, transfer, rental, sale or illegal use of the above mentioned information without the written permission of Artstone Panel Systems Inc. is prohibited. In the event of a violation of an intellectual property right, the violator shall assume all legal liability and retain the right to commence legal proceedings by Artstone Panel Systems Inc. or the rightful owner thereof.

© 2019





Artstone Panel Sistemleri A.Ş.

Barbaros Bulvarı No: 24/B Balmumcu, Beşiktaş | İstanbul | **Türkiye**
T. +90 444 4 278 | **T2.** +90 212 221 11 13
info@artstone.com | **artstone.com**

Artstone Panel Systems GmbH

Gewerbepark am Keramion | Dr.-Gottfried-Cremer-Allee 18/2 | D-50226 Frechen | **Deutschland**
Tel: +49(0)2234 - 990 984 0 | **Fax:** +49(0)2234 - 990 984 9
info@artstone.de | **www.artstone.de**

